



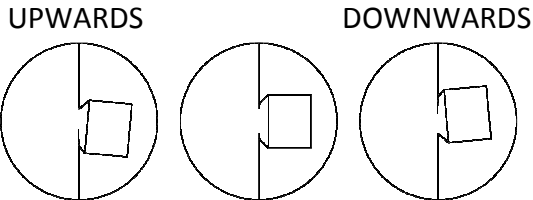
ASSEMBLY AND UNLOCKING GUIDE FOR VARIABLE SPRING SUPPORTS - TYPE G

ASSEMBLY AND UNLOCKING GUIDE FOR VARIABLE SPRING SUPPORTS – TYPE G

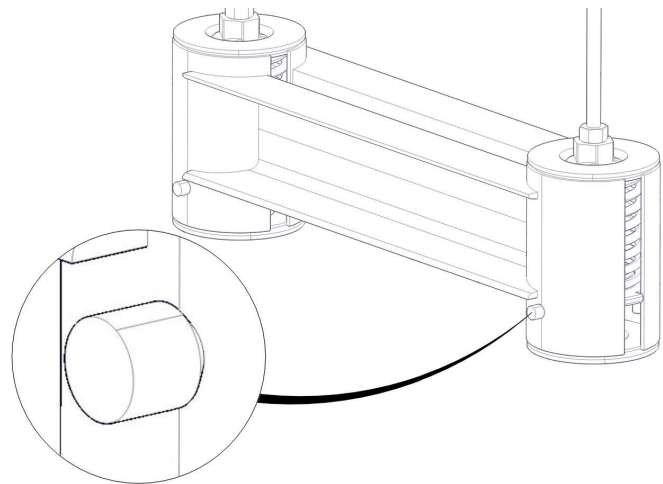
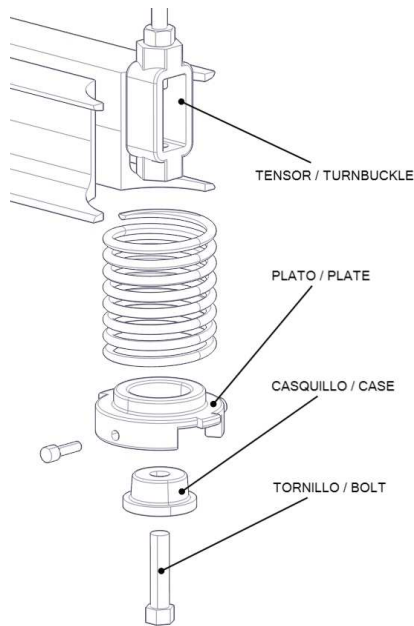
SHEET:
1

Once all the accessories are assembled (clamp, forged eye nut, rods, forged clevis, lug...), it's advisable to give some tack welds between the clamp base and the center of spring beams, if horizontal displacements justify it. That way pipe displacement towards one spring is avoided and so forth both springs receive the same load.

You must follow the next instructions (after the hydraulic test is finished) in order to unlock the spring:

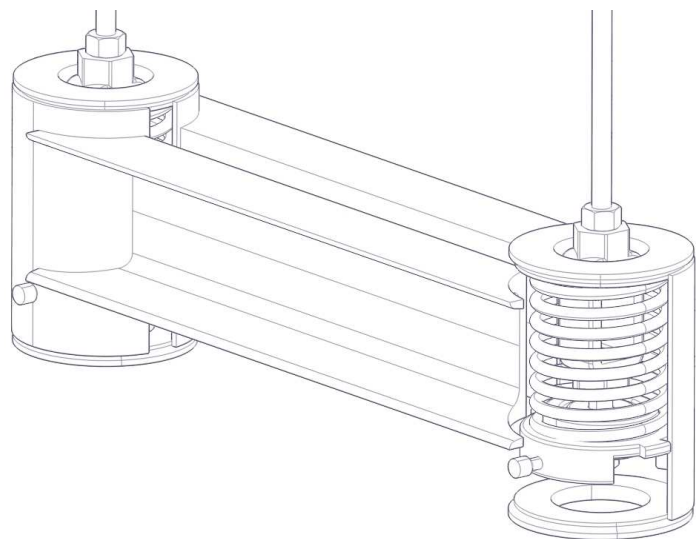


Check the position of the pins. They can be leaning upwards, downwards, or they can be in horizontal position.

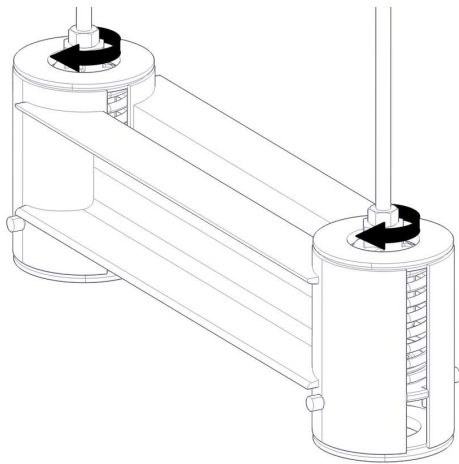


The turnbuckle is welded to the bolt. The bolt leans over the case, and the case over the plate.

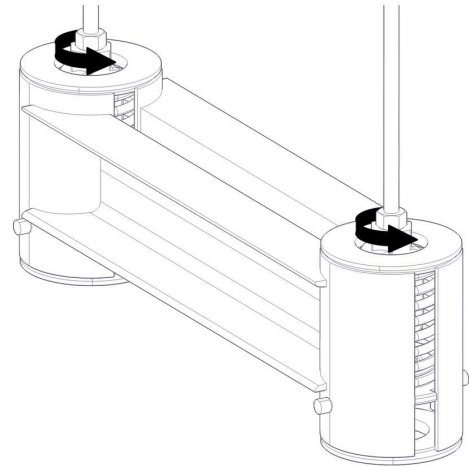
If the pins are leaning upwards (used to come like that after manufacturing), it means that the spring is pushing upwards stronger than the pipe downwards, and the spring must be tightened.



0	09/04/12	INFORMATION	JCC	JMD
REV.	DATE	EDITED FOR	DRAW	CHECK

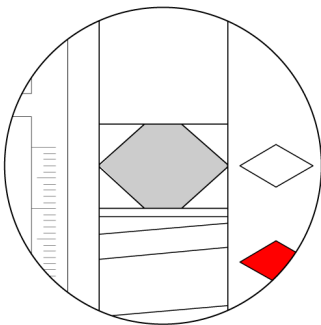


In this case, you should turn clockwise the turnbuckle; it means to screw the rod, until the pins move to the horizontal position. Be careful regulating both supports: they must bear the same load.



If the pins are leaning downwards, it means the spring is overtightened. In this case, you should turn counter clockwise the turnbuckle; it means to unscrew the rod, until the pins move to the horizontal position. Be careful regulating both supports: they must bear the same load.

If you follow these instructions, you will be able to take the anchor pins off easily, using pliers or just your hands.



Once the anchor pins are out, you should check that the middle point of the plate is approximately aligned with the vertex of the blue or white rhombus. If it is not, you must screw or unscrew again the rod until it is aligned.

At the end, all the nuts and check nuts must be screwed, and all the threads must be lubricated.

If there are various spring supports in the same pipe line, you must unlock first those that bear the higher load. Once you unlock all the supports, you should check all the indicators, and if it is necessary, adjust them again.

0	09/04/12	INFORMATION	JCC	JMD
REV.	DATE	EDITED FOR	DRAW	CHECK